

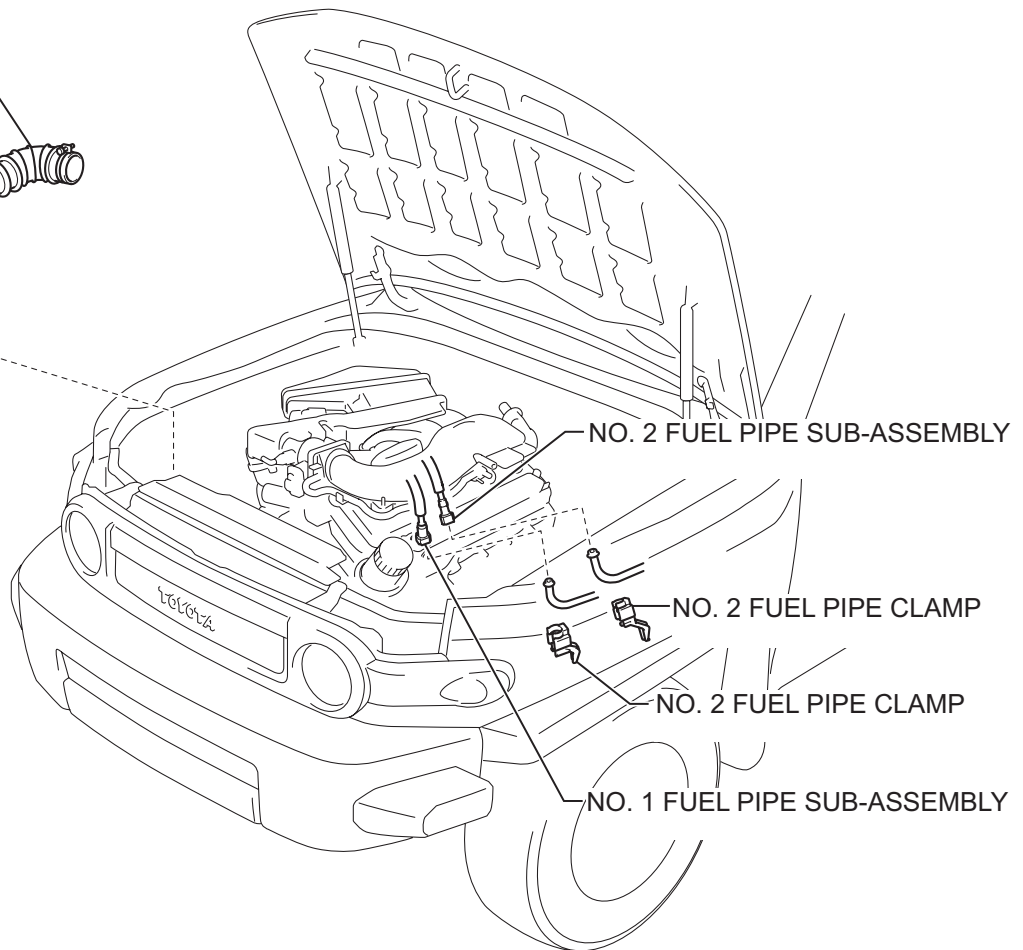
# CYLINDER HEAD

## COMPONENTS

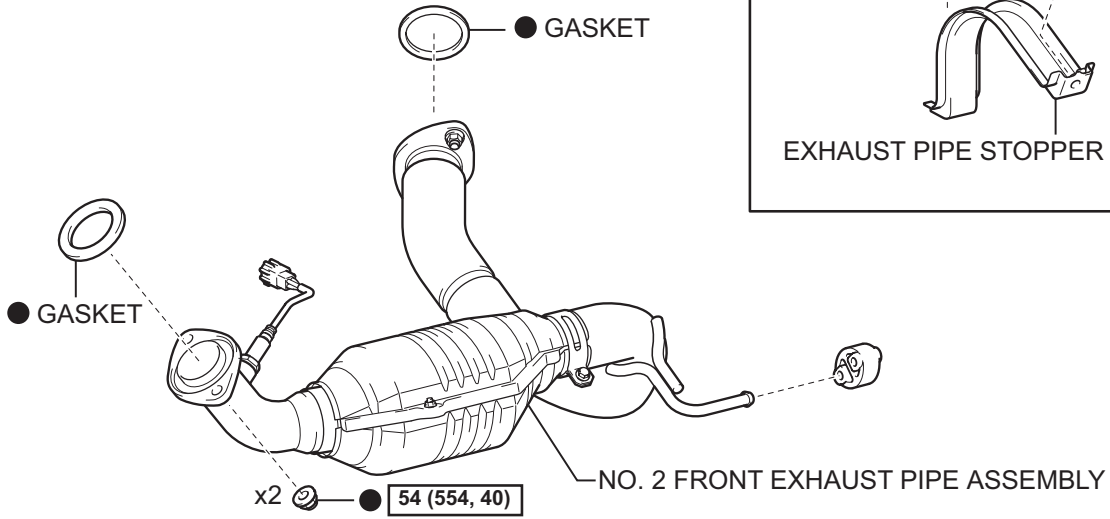
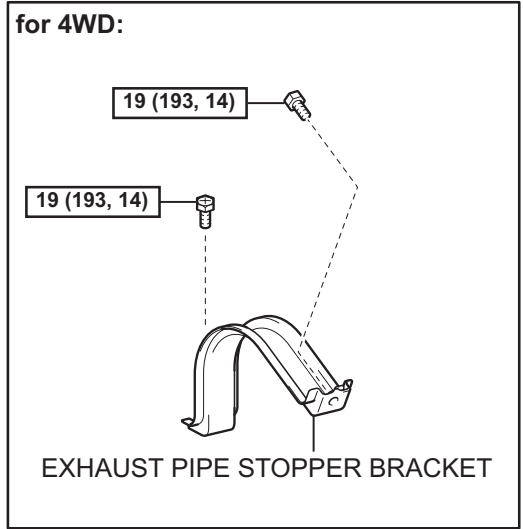
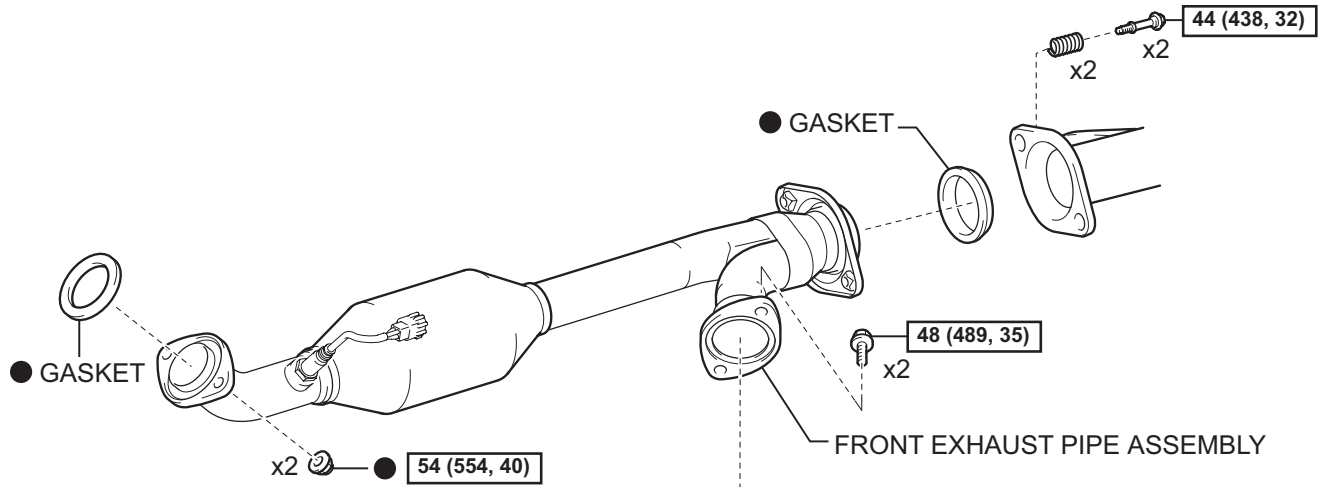
EM

NO. 1 COOL AIR INLET

12 (122, 9.0)



$\boxed{\text{N*m (kgf*cm, ft*lbf)}}$  : Specified torque

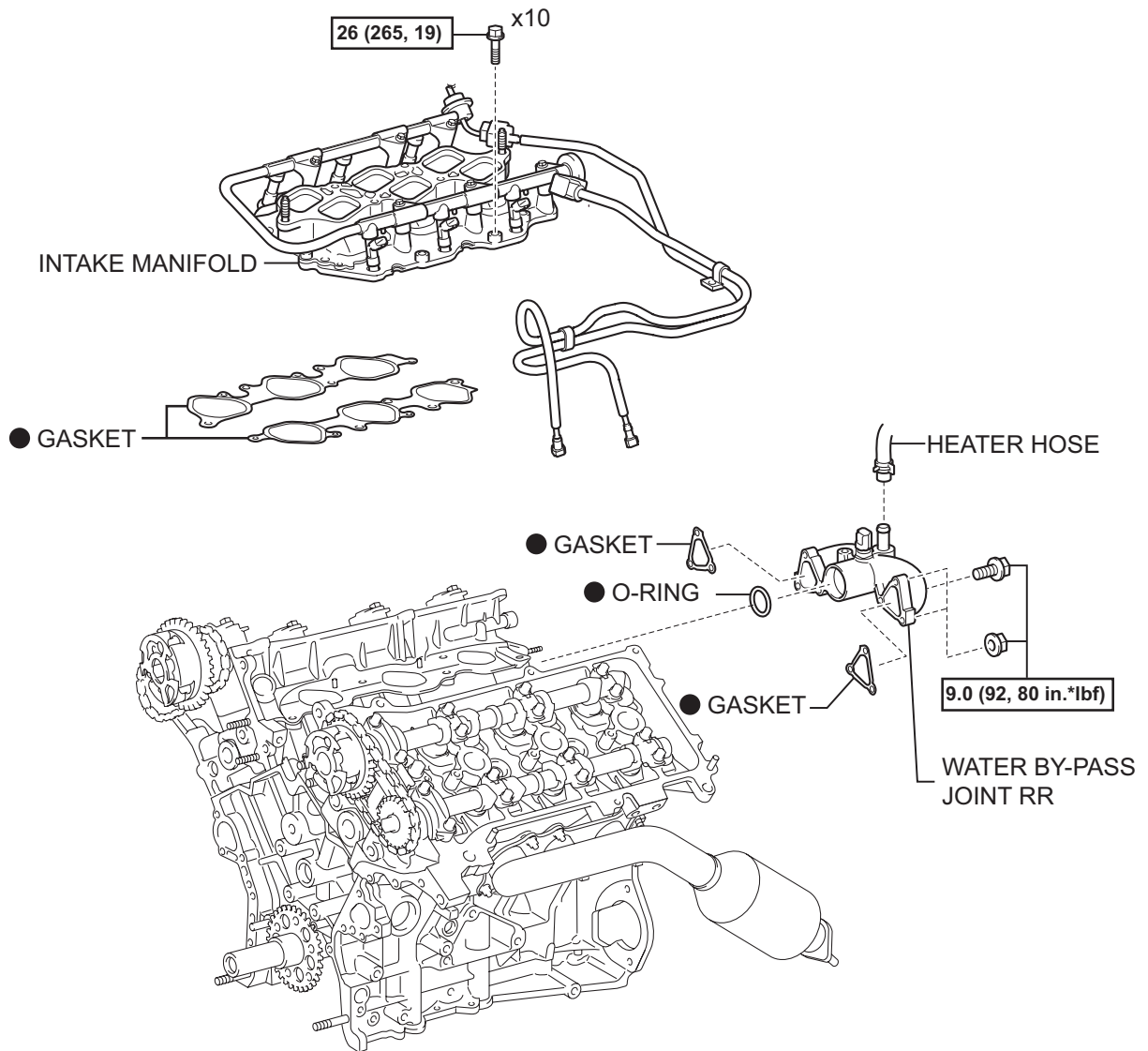


**N\*m (kgf\*cm, ft\*lbf)** : Specified torque

● Non-reusable part

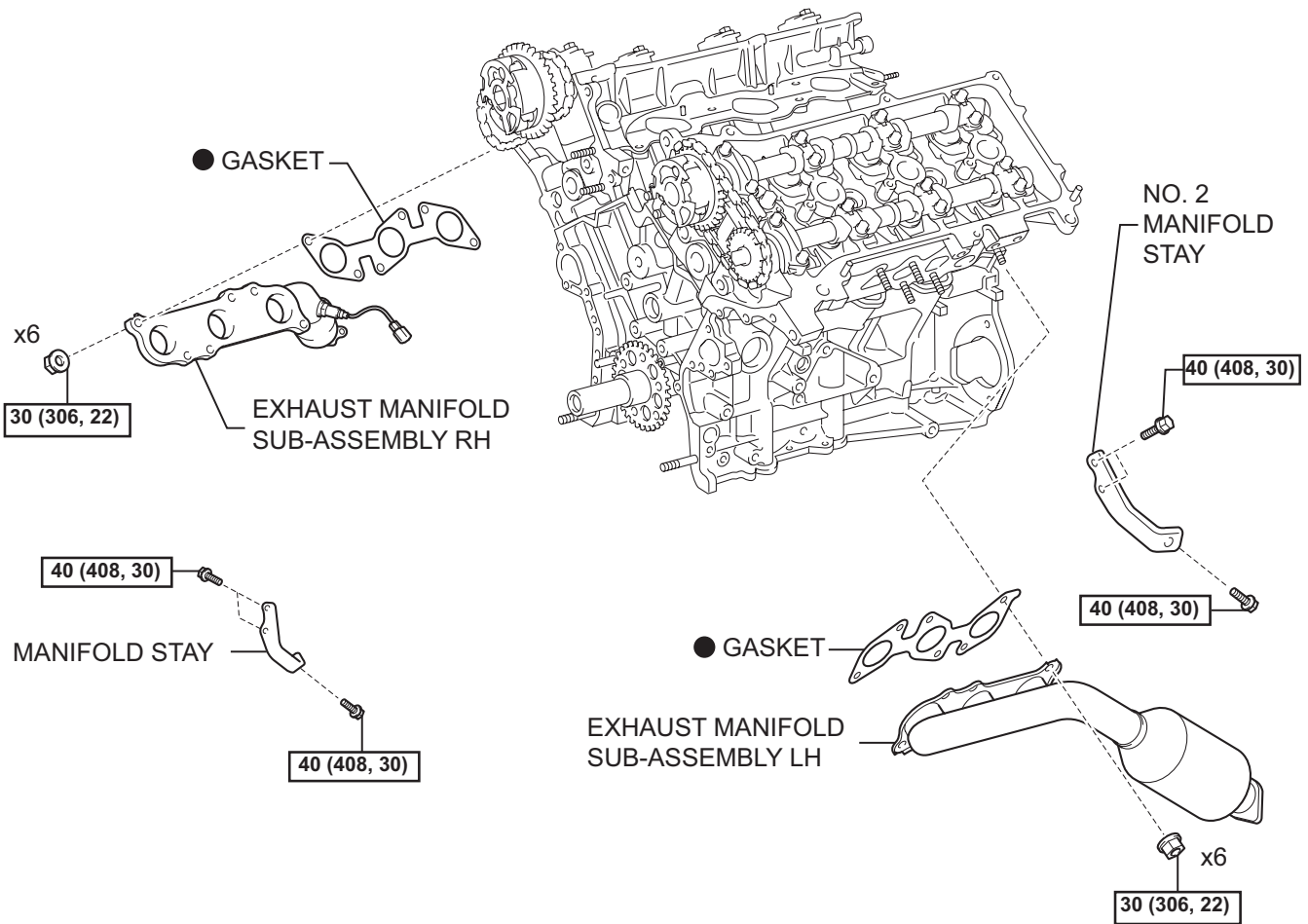
EM

EM



**N\*m (kgf\*cm, ft\*lbf)** : Specified torque

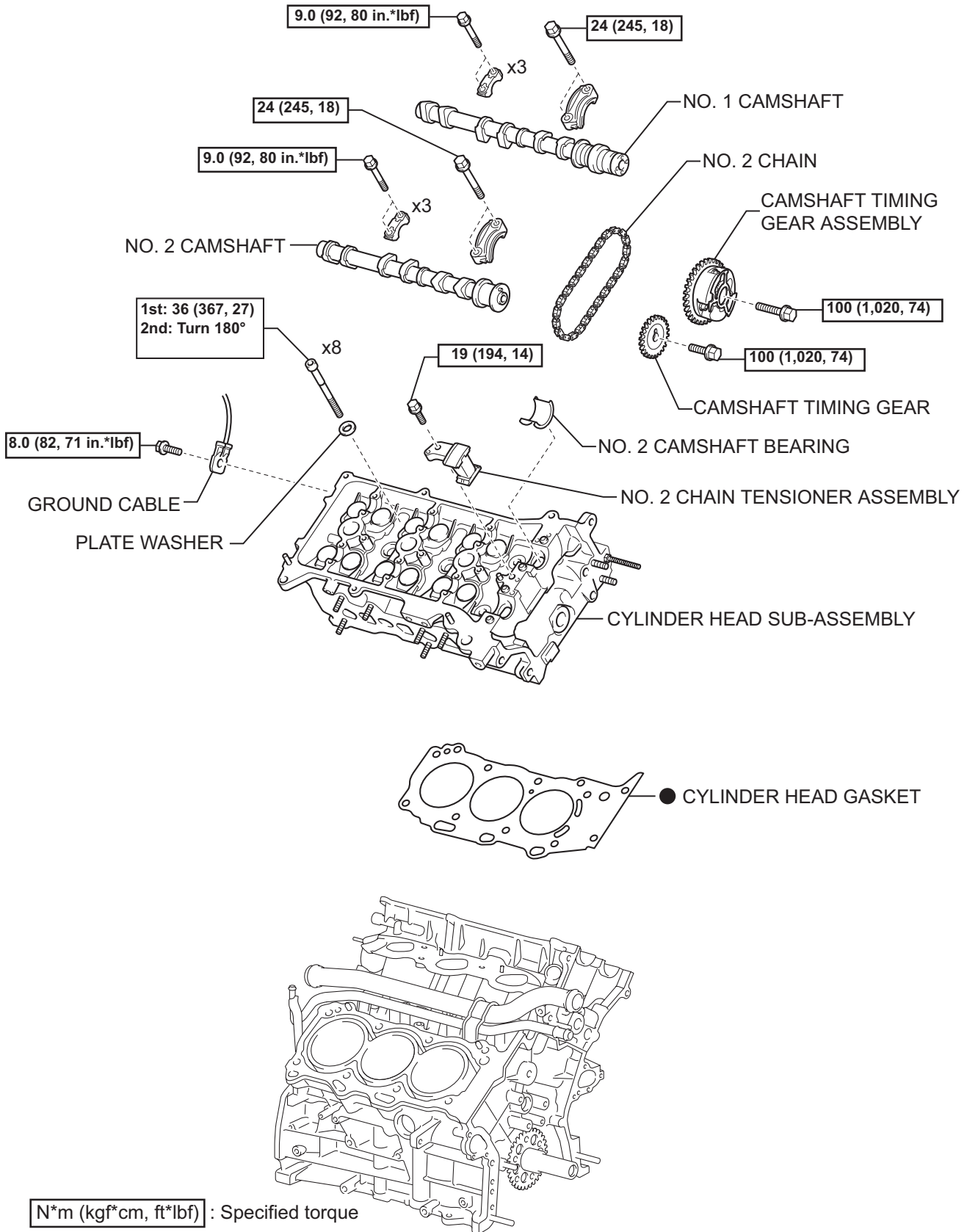
● Non-reusable part



**N\*m (kgf\*cm, ft\*lbf)** : Specified torque

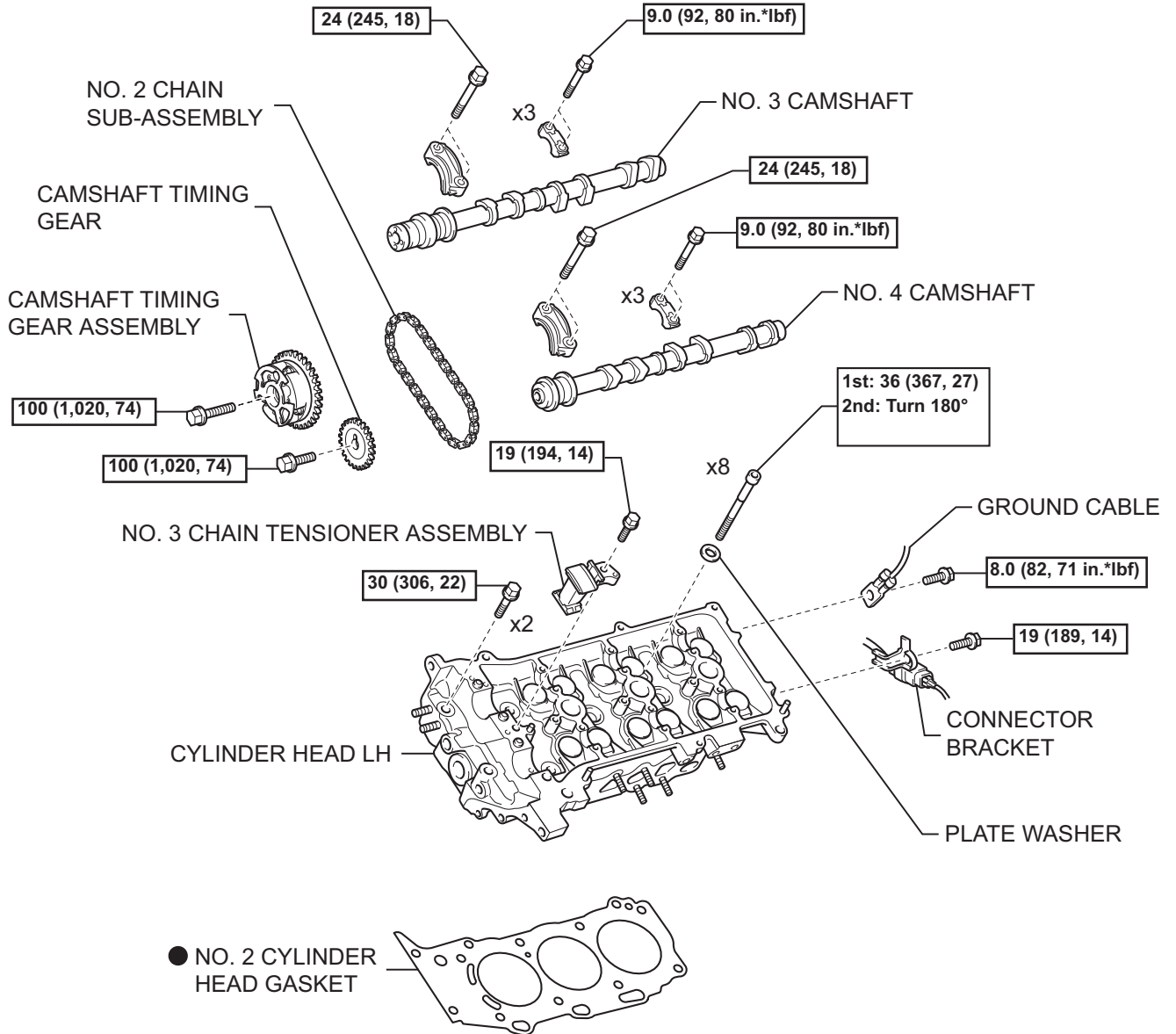
● Non-reusable part

EM



N\*m (kgf\*cm, ft\*lbf) : Specified torque

● Non-reusable part

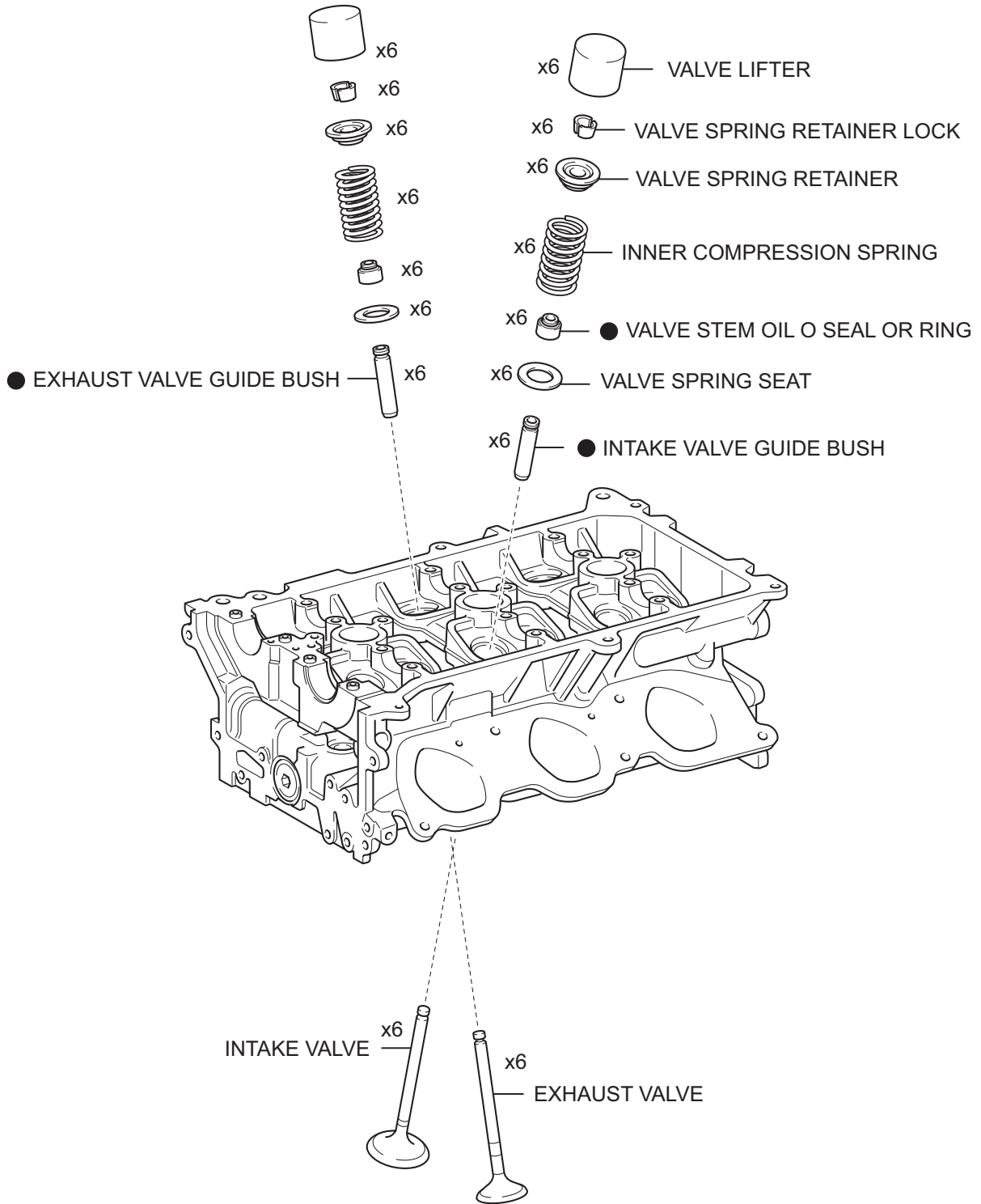


**N\*m (kgf\*cm, ft\*lbf)** : Specified torque

● Non-reusable part

Y

EM



● Non-reusable part